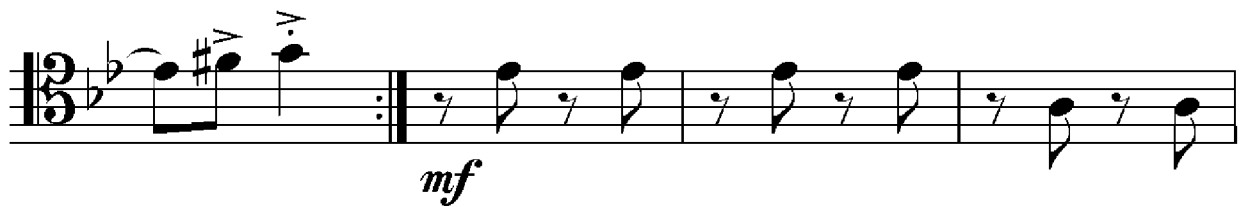


Trombone 1

Inspector Gadget

Haim Saban
Arr. by A. Moral Jurado

Trombone 2

Inspector Gadget

Haim Saban
Arr. by A. Moral Jurado

First staff of music in bass clef, 2/4 time, key of B-flat major. It begins with a rest, followed by a quarter note G2, a quarter note A2, a quarter note B2, and a quarter note C3. A dynamic marking *p* is placed below the first note. A slur covers the last three notes, with a dynamic marking *sfz* below it. The staff ends with a repeat sign, followed by a quarter note B2, a quarter note A2, and a quarter note G2, with a dynamic marking *p* below the first note.

Second staff of music in bass clef, 2/4 time, key of B-flat major. It begins with a quarter rest, followed by eighth notes G2, A2, B2, C3, B2, A2, G2. A dynamic marking *p* is placed below the first note. A slur covers the last three notes, with a dynamic marking *sfz* above it.

Third staff of music in bass clef, 2/4 time, key of B-flat major. It begins with a quarter rest, followed by eighth notes G2, A2, B2, C3, B2, A2, G2. A dynamic marking *f* is placed below the first note. A slur covers the last three notes, with a dynamic marking *sfz* above it. The staff ends with a repeat sign, followed by a quarter note B2, a quarter note A2, and a quarter note G2, with a dynamic marking *f* below the first note.

Fourth staff of music in bass clef, 2/4 time, key of B-flat major. It begins with a quarter note B2, a quarter note A2, a quarter note G2, a quarter note F2, a quarter note E2, a quarter note D2, a quarter note C2, and a quarter note B1. A dynamic marking *f* is placed below the first note.

Fifth staff of music in bass clef, 2/4 time, key of B-flat major. It begins with a quarter note B2, a quarter note A2, a quarter note G2, a quarter note F2, a quarter note E2, a quarter note D2, a quarter note C2, and a quarter note B1. A dynamic marking *f* is placed below the first note. A slur covers the last three notes, with a dynamic marking *p* below it.

Sixth staff of music in bass clef, 2/4 time, key of B-flat major. It begins with a quarter rest, followed by eighth notes G2, A2, B2, C3, B2, A2, G2. A dynamic marking *p* is placed below the first note. A slur covers the last three notes, with a dynamic marking *sfz* above it.

Seventh staff of music in bass clef, 2/4 time, key of B-flat major. It begins with a quarter rest, followed by eighth notes G2, A2, B2, C3, B2, A2, G2. A dynamic marking *p* is placed below the first note. A slur covers the last three notes, with a dynamic marking *sfz* above it. The staff ends with a double bar line.

Trombone 3

Inspector Gadget

Haim Saban
Arr. by A. Moral Jurado

First staff of music in bass clef, 2/4 time signature, key of B-flat major. It begins with a rest, followed by a quarter note G2, a quarter note F2, and a quarter note E2. A slur covers the next two measures: a quarter note D2 and a quarter note C2. A dynamic marking *p* is placed below the first measure. A repeat sign follows, with a dynamic marking *sfz* below the first measure of the repeat and a dynamic marking *p* below the second measure. The repeat contains a quarter note B1, a quarter note A1, and a quarter note G1.

Second staff of music in bass clef, 2/4 time signature, key of B-flat major. It begins with a quarter note G1, a quarter note F1, and a quarter note E1. A slur covers the next two measures: a quarter note D1 and a quarter note C1. A dynamic marking *sfz* is placed above the first measure of the slur. The staff continues with a quarter note B1, a quarter note A1, and a quarter note G1.

Third staff of music in bass clef, 2/4 time signature, key of B-flat major. It begins with a quarter note G1, a quarter note F1, and a quarter note E1. A dynamic marking *f* is placed below the first measure. A slur covers the next two measures: a quarter note D1 and a quarter note C1. A dynamic marking *mf* is placed below the first measure of the slur. The staff continues with a quarter note B1, a quarter note A1, and a quarter note G1.

Fourth staff of music in bass clef, 2/4 time signature, key of B-flat major. It begins with a quarter note G1, a quarter note F1, and a quarter note E1. The staff continues with a quarter note D1, a quarter note C1, and a quarter note B1.

Fifth staff of music in bass clef, 2/4 time signature, key of B-flat major. It begins with a quarter note G1, a quarter note F1, and a quarter note E1. A slur covers the next two measures: a quarter note D1 and a quarter note C1. A dynamic marking *p* is placed below the first measure of the slur. The staff continues with a quarter note B1, a quarter note A1, and a quarter note G1.

Sixth staff of music in bass clef, 2/4 time signature, key of B-flat major. It begins with a quarter note G1, a quarter note F1, and a quarter note E1. A slur covers the next two measures: a quarter note D1 and a quarter note C1. A dynamic marking *f* is placed below the first measure of the slur. The staff continues with a quarter note B1, a quarter note A1, and a quarter note G1.

Trombone Bass
(Tuba)

Inspector Gadget

Haim Saban
Arr. by A. Moral Jurado