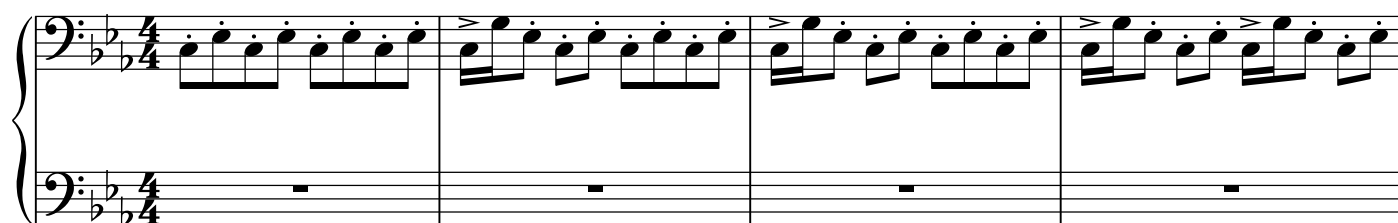


# Mind Heist

from the "INCEPTION" trailer

*Music by Zack Hemsey  
Transcribed by Taioo  
Sheet Music by Ota*

**Moderate** ♩ = 86



Measures 9-11 of a musical score. The key signature has two flats (B-flat and E-flat). The music is written for a grand staff (treble and bass clefs). The right hand plays a continuous eighth-note pattern with accents. The left hand plays a single note (F2) in measure 9, followed by rests in measures 10 and 11. A dashed line with the number (8) is below the left hand staff in measure 9.

Measures 12-15 of a musical score. The right hand continues the eighth-note pattern. The left hand has rests in measures 12 and 13, followed by a half note (F2) in measure 14 and a whole note (F2) in measure 15. A dashed line with the number 8<sup>vb</sup> is below the left hand staff in measure 15.

Measures 16-18 of a musical score. The right hand continues the eighth-note pattern. The left hand plays a half note (F2) in measure 16, followed by rests in measures 17 and 18. A dashed line with the number 8<sup>vb</sup> is below the left hand staff in measure 16.

Measures 19-22 of a musical score. The right hand plays a continuous eighth-note pattern with accents. The left hand plays a half note (F2) in measure 19, followed by rests in measures 20 and 21, and a whole note (F2) in measure 22. A dashed line with the number (8) is below the left hand staff in measure 19.

Measures 23-26 of a musical score. The right hand plays a continuous eighth-note pattern with accents. The left hand plays a half note (F2) in measure 23, followed by rests in measures 24 and 25, and a whole note (F2) in measure 26. A dashed line with the number (8) is below the left hand staff in measure 23.

27

(8).....

31

(8).....

35

(8).....

38

(8).....

40

(8).....