

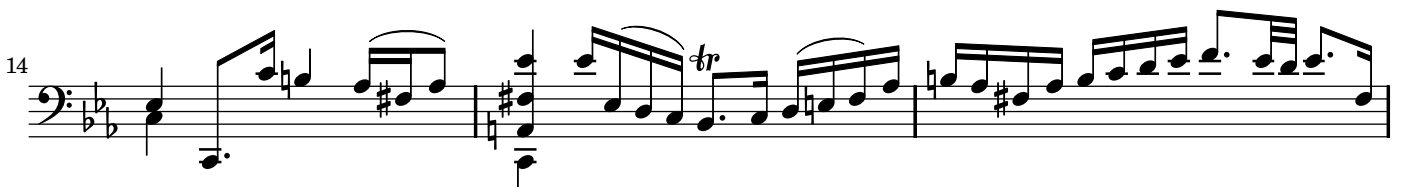
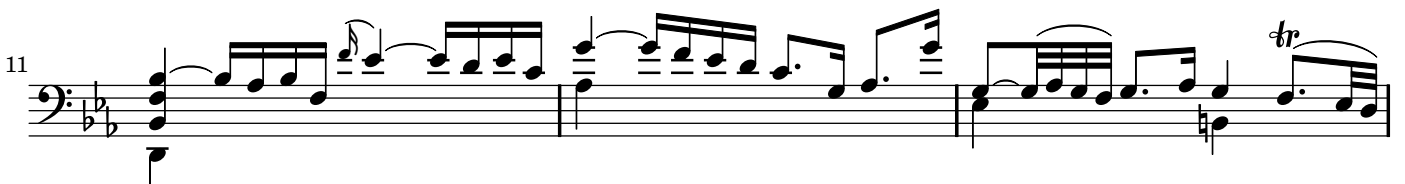
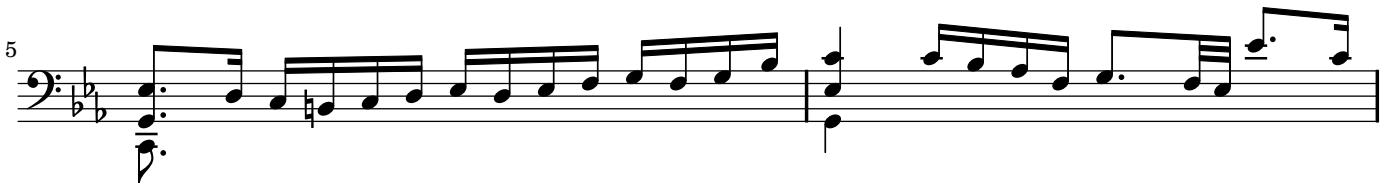
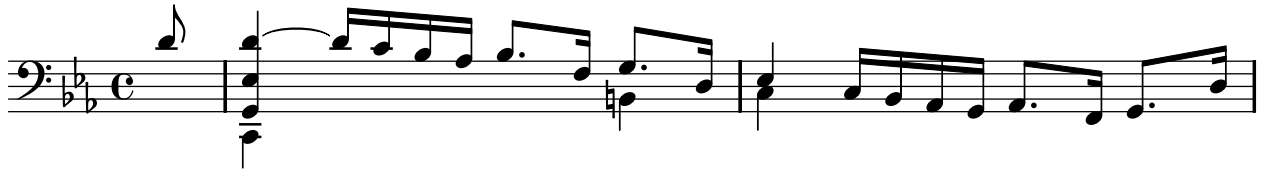
Cello Suite V

"Sechs Suiten für Violoncello"

Johann Sebastian Bach (1685-1750)
BWV 1011

2. Allemande

Cello



Musical score for bass clef, measures 17-34. The score is written in a key signature of two flats (B-flat and E-flat) and a common time signature. The music features a variety of rhythmic patterns, including eighth and sixteenth notes, and rests. Trills are indicated by 'tr' above notes. The score is divided into systems of four measures each, with measure numbers 17, 20, 23, 26, 29, 32, and 34 marking the beginning of each system. The piece concludes with a double bar line and repeat dots at the end of measure 34.