

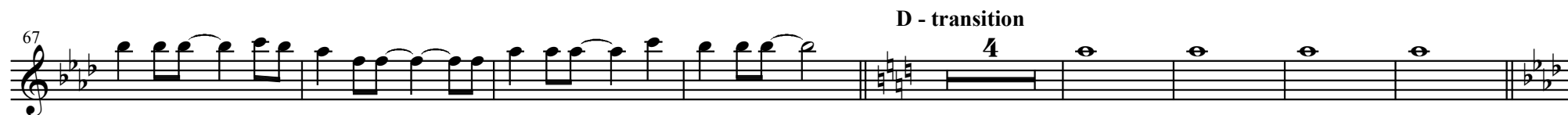
L'aventurier (Structure : ABBCDBCE)

Flûte 1

Indochine

♩ = 172

A - introduction



$\bullet = 172$

A - introduction

8

Musical staff for section A - introduction, measures 1-8. The staff is in treble clef with a common time signature (C). It begins with a whole rest for 8 measures.

15

Musical staff for section B - couplet, measures 15-30. It starts with a whole note G4, followed by a whole rest for 8 measures, then a melodic line of eighth notes.

31

Musical staff for section B - couplet, measures 31-37. Continuation of the melodic line from the previous staff.

38

Musical staff for section B - couplet, measures 38-52. Continuation of the melodic line, ending with a whole rest for 8 measures.

tacet 1. fois

53

Musical staff for section C - refrain, measures 53-61. The key signature changes to two flats (B-flat and E-flat). It begins with a whole rest for 4 measures, followed by a melodic line.

C - refrain

62

Musical staff for section C - refrain, measures 62-70. Continuation of the melodic line.

71

Musical staff for section D - transition, measures 71-81. It begins with a whole rest for 4 measures, followed by a melodic line.

D - transition

4

E - Coda

82

Musical staff for section E - Coda, measures 82-88. Continuation of the melodic line, ending with a double bar line.

L'aventurier (Structure : ABBCDBCE)

Clarinete 1

Indochine

♩ = 172

A - introduction

Musical notation for section A - introduction, measures 1-10 and 11-20. The key signature is one sharp (F#) and the time signature is common time (C). The notation includes a double bar line with a '2' above it at the end of the first line, and a double bar line with an '8' above it at the end of the second line.

Musical notation for section B - couplet, measures 27-34. The key signature is one sharp (F#) and the time signature is common time (C). The notation includes a double bar line at the end of the line.

Musical notation for section B - couplet, measures 35-40. The key signature is one sharp (F#) and the time signature is common time (C). The notation includes a double bar line at the end of the line.

Musical notation for section B - couplet, measures 41-50. The key signature is one sharp (F#) and the time signature is common time (C). The notation includes a double bar line with an '8' above it, followed by the instruction 'tacet 1. fois', and a double bar line at the end of the line.

Musical notation for section C - refrain, measures 55-66. The key signature is one flat (Bb) and the time signature is common time (C). The notation includes a double bar line at the end of the line.

Musical notation for section D - transition, measures 67-78. The key signature is one flat (Bb) and the time signature is common time (C). The notation includes a double bar line with a '4' above it, followed by a double bar line at the end of the line.

Musical notation for section E - Coda, measures 79-88. The key signature is one flat (Bb) and the time signature is common time (C). The notation includes a double bar line at the end of the line.

♩ = 172
A - introduction

Musical notation for section A - introduction, measures 1-14. The key signature is two sharps (F# and C#), and the time signature is common time (C). The notation consists of eighth notes and quarter notes, with a fermata over the first measure.

15 B - couplet

Musical notation for section B - couplet, measures 15-30. The key signature is two sharps. The notation features a melodic line with a fermata over measures 15-17, followed by eighth notes and quarter notes.

31

Musical notation for section B - couplet, measures 31-37. The notation continues with eighth notes and quarter notes.

38 8 tacet 1. fois

Musical notation for section B - couplet, measures 38-52. The notation includes a fermata over measures 38-40, followed by eighth notes and quarter notes, and ends with a first-time tacet instruction.

53 C - refrain

Musical notation for section C - refrain, measures 53-61. The key signature changes to one sharp (F#) and one flat (Bb). The notation features a melodic line with a fermata over measures 53-55.

62

Musical notation for section C - refrain, measures 62-70. The notation continues with a melodic line and a fermata over measures 62-64.

71 D - transition 4 E - Coda

Musical notation for section D - transition and E - Coda, measures 71-81. The key signature changes to one flat (Bb). The notation includes a four-measure rest for section D, followed by eighth notes and quarter notes for section E.

82

Musical notation for section E - Coda, measures 82-88. The notation continues with eighth notes and quarter notes, ending with a fermata over measures 82-84.

• = 172 A - introduction
18

25 B - couplet
8

39 Continuer à détacher en croches (si possible)
4

53 C - refrain
8

67 D - transition
8 E - Coda

81

♩ = 172 A - introduction
18

25 B - couplet
8

39 Continuer à détacher en croches (si possible)
4

53 C - refrain
8

69 D - transition E - Coda
8

82

♩ = 172

A - introduction
26

B - couplet

33

41

4

C - refrain

51

58

D - transition

65

E - Coda

75

4

L'aventurier (Structure : ABBCDBCE)

Sax Alto 2

Indochine

• = 172 A - introduction

15 Continuer à détacher en croches (si possible)

27 B - couplet

40 4

50

57

64 ne pas détacher en croches D - transition

75 2 E - Coda

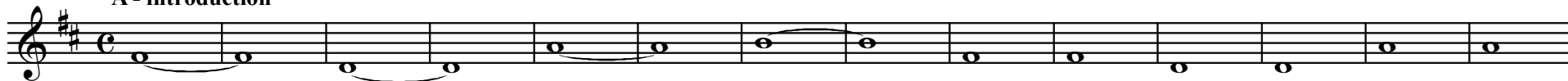
L'aventurier (Structure : ABBCDBCE)

Sax Ténor

Indochine

♩ = 172

A - introduction



ne pas détacher en croches ici

L'aventurier (Structure : ABBCDBCE)

Cor en fa (jouer si possible une octave en dessous)

Indochine

• = 172

A - introduction

15 Continuer à détacher en croches (si possible)

27 **B - couplet**

43

55 **C - refrain**

62

69 **D - transition**

79 **E - Coda**

ne pas détacher en croches ici

L'aventurier (Structure : ABBCDBCE)

Trombone

Indochine

♩ = 172

A - introduction

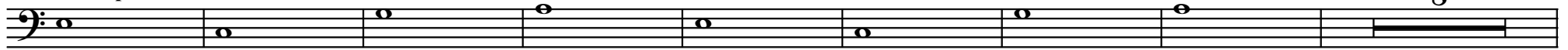


15

Continuer à détacher en croches (si possible)



27 B - couplet



43



55 C - refrain



62



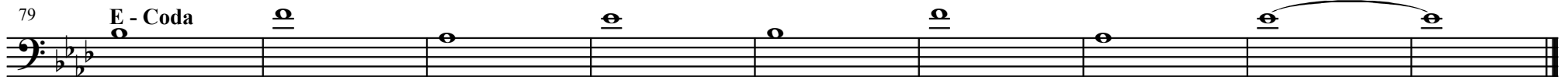
69

D - transition



79

E - Coda



ne pas détacher en croches ici

L'aventurier (Structure : ABBCDBCE)

Sax Baryton

Indochine

♩ = 172 A - introduction 18 Continuer à détacher en croches (si possible)

27 B - couplet

43

55 C - refrain 4

66 D - transition 8

79 E - Coda

L'aventurier (Structure : ABBCDBCE)

Souba B

Indochine

♩ = 172 A - introduction
18

Continuer à détacher en croches (si possible)



27 B - couplet



43



C - refrain
4



66

D - transition
8



79

E - Coda

